



• CONVERSIONS
• TOY HAULERS



VINTAGE TRAILERS.COM

574.522.2261



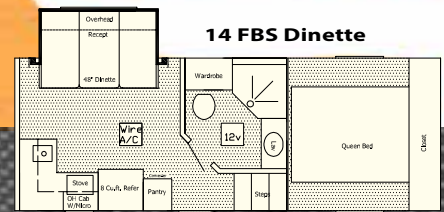
WE KNOW WHAT IT TAKES

Whether you are an enthusiast of ATV's, motorcycles, hot rods, show cars or anything in between, Vintage has a trailer that is right for you. Vintage Trailers has been providing **high-quality affordable custom trailers** with and without living quarters for years. We are a company whose quality comes from attention to detail. We build our trailers and do our own conversions in house.

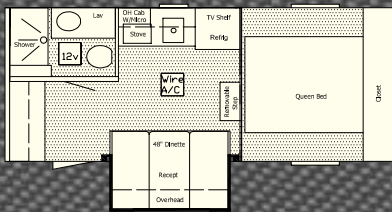
If you are looking for a race car trailer, you can be confident in a Vintage Trailer. Whether you are a serious racer, or if you're new to the racing world, Vintage has a **trailer to fit your needs**. You no longer have to be one of the "big boys" to enjoy a comfortable and functional home away from home at the track.

SLIDE-OUTS

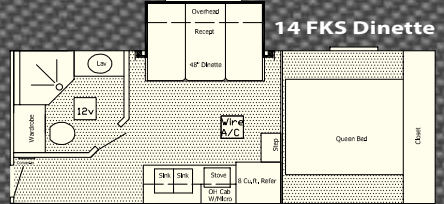
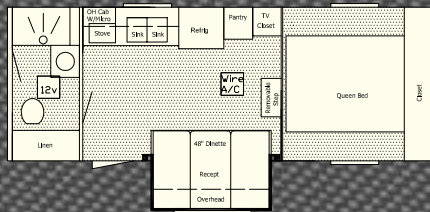
All Slide-Outs are available with a Sofa or Dinette.



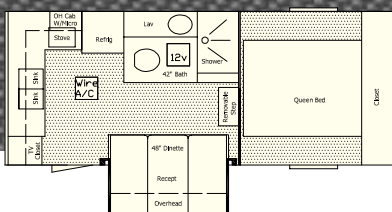
12 LQ RBS Dinette



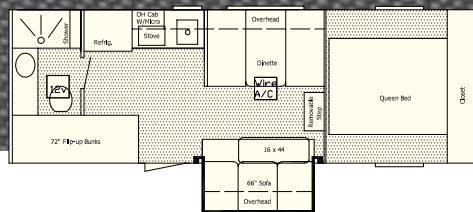
14 LQ RBS Dinette



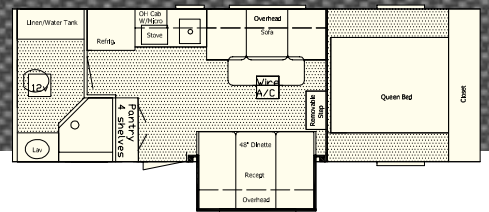
12 LQ RKS Dinette



16'3" LQ Slide



16'3" RBS LQ Dinette



Our models include the Outlaw and our newest model the Vintage Pro Stock, the Vintage Stacker, and the Stacker Elite. At Vintage Trailers we pride ourselves in being able to accommodate customers who have special needs and desires for their trailer. We truly are a **custom trailer builder**.

It is our **passion** to provide the best experience for your trailer-hauling adventure. We would love for you to be among our many satisfied customers of our car haulers, toy haulers, race trailers, custom trailers, living quarters, and conversions. Whether you are a weekend-warrior or a full-timer, Vintage has the **perfect fit** in a trailer for you.



Innovation.
Creation.

All Living Quarters Floor Plans Come STANDARD with the Following Items:

- Insulated Walls and Ceiling
- Decorator Board on Walls
- Vinyl Flooring
- Egress Window
- Mini Blinds and Valances
- Microwave
- Gas Package* Standard in all Gooseneck LQ's (Optional in Tags)
- Range Cover (Gooseneck Only)
- Gas 8.0 Cu. Ft. Refrigerator (Except 12 SD Gooseneck and ALL TAGS)
- Pressurized Hot and Cold Water System with Tanks
- 6 Gallon Gas DSI Hot Water Heater
- Monitor Panel (Standard on Goosenecks Only)
- Wired for Air Conditioning
- 12 Volt Lights
- 12 Volt Roof Vent w/ Switch in Bath
- Battery Box and Converter
- Cherry Panel Cabinetry with Cherry Panel Doors
- Queen Size Bed with spread in Gooseneck
- Vented Complete Bathroom Facility Including Shower/Toilet
- Porch Light with Switch
- Large Grab Handle at Side Door
- Hydraulic Jack on Goosenecks

Tank Sizes

- Gooseneck - 60 Gallon Fresh Water Tank - 60 Gallon Grey Tank - 30 Gallon Black Tank
- TAG - 51 Gallon Fresh Water Tank - 60 Gallon Grey Tank - 30 Gallon Black Tank

Furniture Options

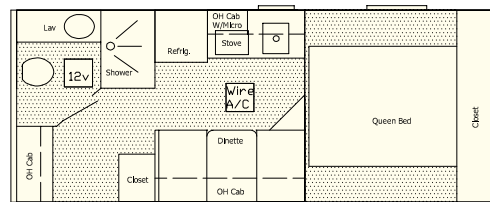
VINYL: ○ Brown ○ Tan ○ Black

***Gas Package** - Gas DSI Water Heater, Gas Refrigerator, Gas Stove Top & Cover, Stove Hood, Gas Furnace, LP & CO2 Detectors & LP Bottles

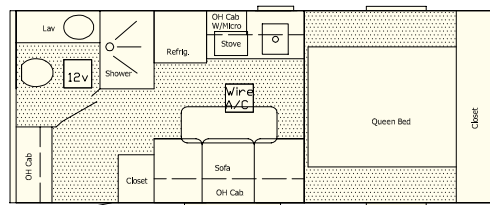
LIVING QUARTERS

Gooseneck Models

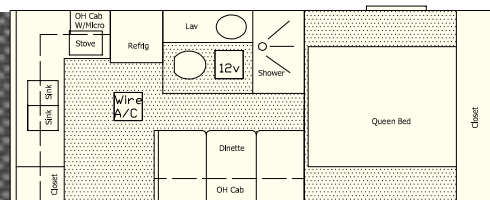
12 LQ Dinette



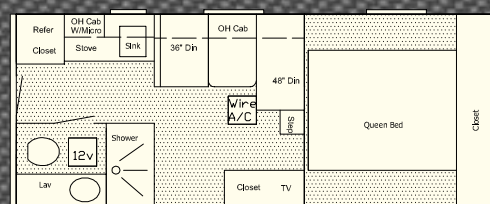
12 LQ Sofa



12 LQ RK

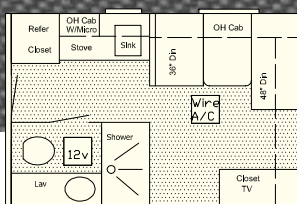


12 LQ SD - 3.6 Cu.Ft. Refrigerator

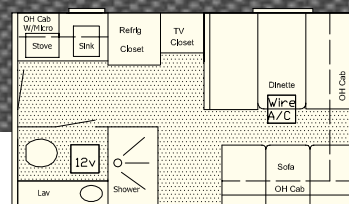


TAG Models

12 LQ SD



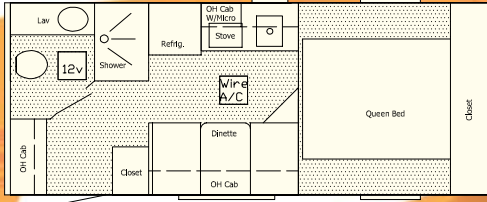
14 LQ SD



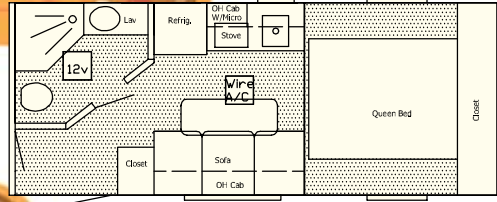
Some Trailers Shown with Optional Equipment.

Gooseneck Models

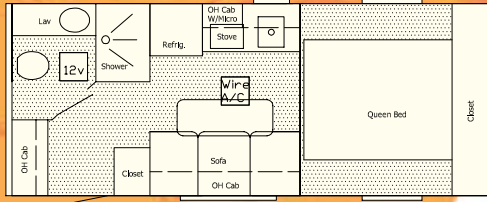
12 LQ Dinette



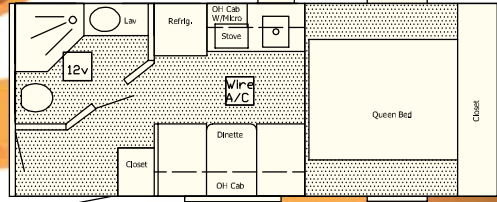
12 Sofa w/Corner Bath



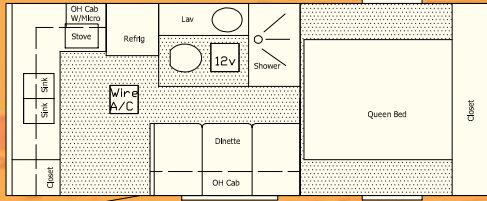
12 LQ Sofa



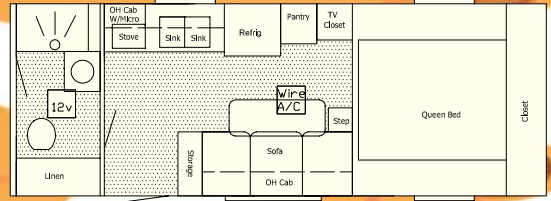
12 Dinette w/Corner Bath



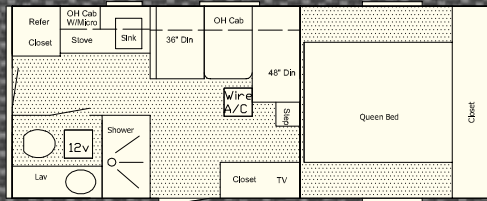
12 LQ RK



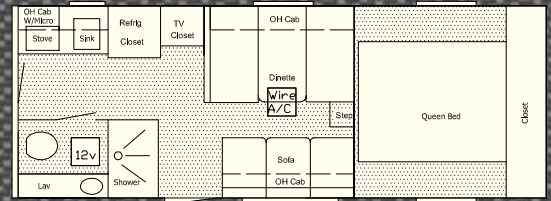
14 LQ RB



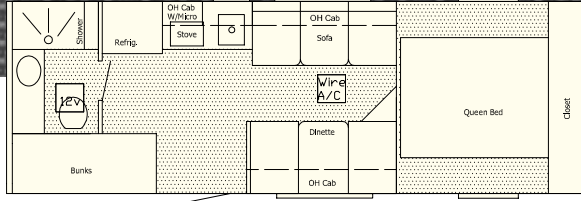
12 LQ SD - 3.6 Cu.Ft. Refrigerator



14 LQ SD



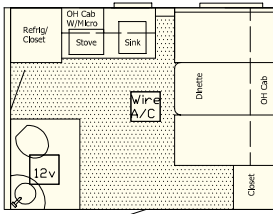
16 LQ Bunks



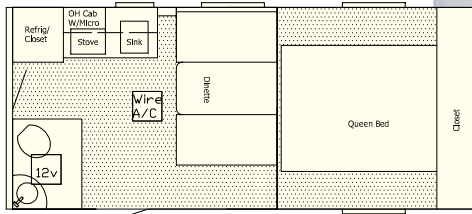
RVT SERIES



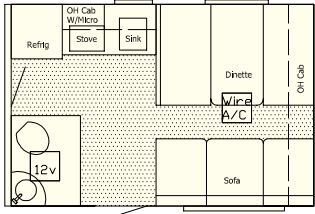
10'6" RVT



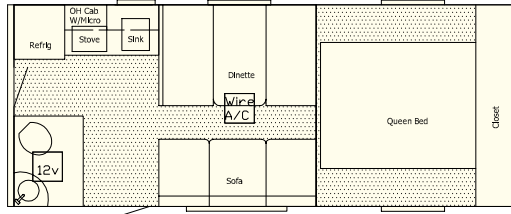
10'6" RVT



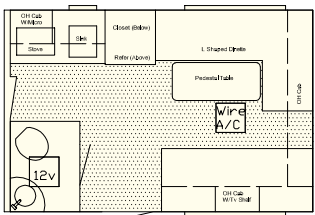
12 RVT



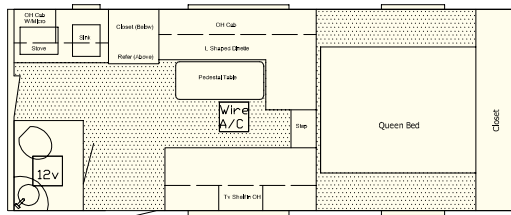
12 RVT



12 RVT LD



12 RVT LD



All RVT Floor Plans Come STANDARD with the Following Items:

- Insulated Walls and Ceiling
- Decorator Board on Walls
- Vinyl Flooring
- Pass Thru Door to Cargo Area
- Egress Window
- Mini Blinds and Valances
- Microwave
- Electric Refrigerator (110Volt Only)
- Pressurized Hot and Cold Water System with Tanks
- 6 Gallon Hot Water Heater
- Wired for Air Conditioning
- 12 Volt Lights
- 12 Volt Roof Vent w/ Switch in Bath
- Battery Box and Converter
- Cherry Panel Cabinetry with Cherry Panel Doors
- Queen Size Bed with spread in Goosenecks
- 6' Fold Down Sleeper Dinette on 10' and 12' Models
- 6' Sleeper Sofa Standard on 12' Model only
- Vented Complete Bathroom Facility Including Shower/Toilet
- Porch Light with Switch
- Large Grab Handle at Side Door
- Hydraulic Jacks on Goosenecks

Tank Sizes

- Gooseneck - 60 Gallon Fresh Water Tank - 60 Gallon Grey Tank - 30 Gallon Black Tank
- TAG - 51 Gallon Fresh Water Tank - 60 Gallon Grey Tank - 30 Gallon Black Tank

Furniture Options VINYL: ○ Brown ○ Tan ○ Black

Gas Package Option - Gas DSI Water Heater, Gas Refrigerator, Gas Stove Top & Cover, Stove Hood, Gas Furnace, LP & CO2 Detectors & LP Bottles, LP Tank Cover (Tag Only)



X - SPORT

Front Bed (FB)* Standard Equipment

- | | | |
|----------------------------|----------------------------|-----------------------------|
| Decorator Board Walls | 26" RV Door w/ Screen | 10" Brite Anodized Skirting |
| 16,000 BTU Gas Furnace | Gas Stove Top & Cover | Stove Vent |
| Fire Extinguisher | Smoke Detector | Queen Size Mattress |
| Full Size Wardrobe Cabinet | (1) Pedestal Table | Vinyl Flooring |
| Full Size Bathroom | Stand Up Shower w/ Door | Bathroom Vanity |
| 51 gal Fresh Water Tank | 30 gal Black Tank | City Water Fill |
| Flip up Storage Under Bed | 60 gal Grey Tank | RV Step @ Side Door |
| Mini Blinds & Valances | Storage Compartment | 12V Lighting System |
| Roof Vent Wired for A/C | 30 amp L.L. w/ Converter | Porch Light |
| LP Tank Cover | Microwave | LP & CO2 Detectors |
| (1) Fold Down Sofa Cot | 6 Gal Gas DSI Water Heater | Mirror/Towel Rack Door |
| Cherry Raised Panel Doors | Fully Insulated | (1) Battery |
| Grab Handle by Side Door | (2) 48x22 Windows in back | 12V Roof Vent in Bath |

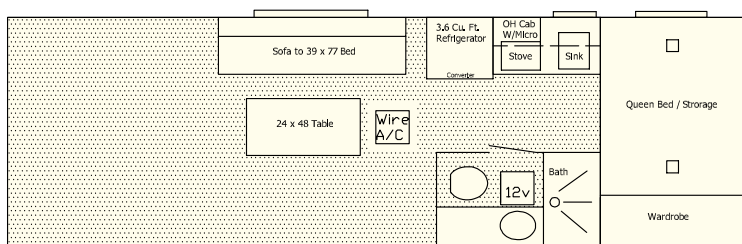
*Front Bed (FB) Models are Available in 26' to 34' Lengths.

Front Kitchen (FK)** Standard Equipment

- | | | |
|----------------------------|--------------------------|-----------------------------|
| Decorator Board Walls | 26" RV Door w/ Screen | 10" Brite Anodized Skirting |
| 16,000 BTU Gas Furnace | Gas Stove Top & Cover | Stove Vent |
| Fire Extinguisher | Smoke Detector | Microwave |
| Full Size Wardrobe Cabinet | (1) Pedestal Table | Vinyl Flooring |
| Full Size Bathroom | Stand Up Shower w/ Door | Bathroom Vanity |
| 51 gal Fresh Water Tank | 30 gal Grey Tank | 30 gal Black Tank |
| Cherry Raised Panel Doors | RV Step @ Side Door | (2) 48x22 Windows in back |
| 30 amp L.L. w/ Converter | 12V Lighting System | (1) Battery |
| Porch Light | Grab Handle by Side Door | LP Tank Cover |
| 6 Gal Gas DSI Water Heater | LP & CO2 Detectors | (2) Fold Down Sofa Cots |
| Fully Insulated | Mirror/Towel Rack Door | City Water Fill |
| Mini Blinds & Valances | Roof Vent Wired for A/C | 12V Roof Vent in Bath |

**Front Kitchen (FK) Models are Available in 24' to 34' Lengths.

X-Sport FB



X-Sport FK

